



**OFFICIAL NCAA BASKETBALL BOX SCORE**  
 Bishop Brossart Mustangs vs Graves County Eagles

03/16/2000 1:00 pm  
 Final Box Score

Arena Boys' Sweet 16, Rupp Arena  
 City,State Lexington, KY

No.	Bishop Brossart Mustangs	Total FG		3-point		FT	FTA	Rebounds			F	TP	A	TO	BLK	STL	MIN
		FG	FGA	FG	FGA			Off	Def	Tot							
3	Nick Ziegler	2	3	2	3	0	0	0	0	0	3	6	0	1	0	2	23:04
5	Jon Lloyd	0	0	0	0	0	0	0	1	1	0	0	3	0	0	0	10:22
10	Michael Eten	0	0	0	0	0	0	0	0	0	0	0	0	0	0	0	DNP
12	Andy Kremer	0	0	0	0	0	0	0	0	0	0	0	0	0	0	0	DNP
14	* Scott Ruth	5	5	2	2	4	6	1	5	6	1	16	0	4	0	3	32:00
22	* Chris Ryan	3	13	0	5	0	0	0	1	1	1	6	2	1	0	1	26:00
24	* Jeff Clark	3	7	0	0	2	2	0	3	3	2	8	2	3	0	1	23:40
25	Rob Lushek	0	0	0	0	1	2	0	0	0	0	1	0	0	0	0	4:26
30	* Dave Enzweiler	2	2	0	0	0	0	1	1	2	3	4	0	0	0	0	9:09
32	Chad Bertke	0	0	0	0	0	0	0	0	0	0	0	0	0	0	0	DNP
33	Paul Rhoden	0	0	0	0	0	0	0	0	0	0	0	0	0	0	0	DNP
35	* Justin Seiter	3	10	0	2	0	0	3	5	8	2	6	2	3	4	3	31:19
42	Brandon Selter	0	0	0	0	0	0	0	0	0	0	0	0	0	0	0	DNP
<b>Team (Included in Totals)</b>								<b>1</b>	<b>2</b>	<b>3</b>							
<b>Totals</b>		<b>18</b>	<b>40</b>	<b>4</b>	<b>12</b>	<b>7</b>	<b>10</b>	<b>6</b>	<b>18</b>	<b>24</b>	<b>12</b>	<b>47</b>	<b>9</b>	<b>12</b>	<b>4</b>	<b>10</b>	<b>160</b>

Total FG%: 1st half 6 - 19 (31.6%) 2nd half 12 - 21 (57.1%) Game 18 - 40 (45.0%)  
 3Pt FG%: 1st half 0 - 5 (0.00%) 2nd half 4 - 7 (57.1%) Game 4 - 12 (33.3%)  
 FT%: 1st half 4 - 6 (66.7%) 2nd half 3 - 4 (75.0%) Game 7 - 10 (70.0%)

Deadball  
 rebounds  
 1

No.	Graves County Eagles	Total FG		3-point		FT	FTA	Rebounds			F	TP	A	TO	BLK	STL	MIN
		FG	FGA	FG	FGA			Off	Def	Tot							
10	Jason Elliott	2	7	2	5	0	0	1	1	2	0	6	1	1	0	0	16:17
12	* Tyler Wiles	1	5	1	5	0	0	0	4	4	3	3	1	0	0	0	17:07
14	* Wes Hatcher	2	6	0	1	0	0	2	2	4	2	4	3	6	0	1	32:00
20	Jason Doughty	0	0	0	0	0	0	0	0	0	0	0	0	0	0	0	DNP
22	Chase Kendall	0	0	0	0	0	0	0	0	0	0	0	0	0	0	0	DNP
24	* Kent Manning	1	4	0	1	0	0	0	2	2	1	2	5	5	0	2	26:38
30	Sam Brown	0	0	0	0	0	0	0	0	0	0	0	0	0	0	0	DNP
32	Coye Elliott	0	0	0	0	0	0	0	0	0	0	0	0	0	0	0	DNP
34	John James	2	3	0	0	0	0	0	3	3	2	4	0	1	1	0	12:09
40	* Nathan Wilkerson	2	8	0	0	0	0	2	0	2	0	4	0	1	0	0	21:12
42	Chase Gray	0	0	0	0	0	0	0	0	0	0	0	0	0	0	0	DNP
44	* Wes Johnson	6	6	0	0	3	6	2	6	8	4	15	1	1	2	1	31:58
50	Mykel Tidwell	0	0	0	0	0	0	0	0	0	0	0	0	0	0	0	DNP
52	Zach Baldwin	0	0	0	0	0	0	0	0	0	0	0	0	0	0	0	DNP
54	Stephen Hatchell	1	1	0	0	0	1	0	0	0	0	2	0	1	0	0	2:39
<b>Team (Included in Totals)</b>								<b>1</b>	<b>0</b>	<b>1</b>							
<b>Totals</b>		<b>17</b>	<b>40</b>	<b>3</b>	<b>12</b>	<b>3</b>	<b>7</b>	<b>8</b>	<b>18</b>	<b>26</b>	<b>12</b>	<b>40</b>	<b>11</b>	<b>16</b>	<b>3</b>	<b>4</b>	<b>160</b>

Total FG%: 1st half 10 - 19 (52.6%) 2nd half 7 - 21 (33.3%) Game 17 - 40 (42.5%)  
 3Pt FG%: 1st half 2 - 6 (33.3%) 2nd half 1 - 6 (16.7%) Game 3 - 12 (25.0%)  
 FT%: 1st half 1 - 3 (33.3%) 2nd half 2 - 4 (50.0%) Game 3 - 7 (42.9%)

Deadball  
 rebounds  
 1

Technical Fouls: None  
 Attendance: Unknown  
 Officials: Roger Cross, Jerry Hurley, Bruce Morris

Score by Period	1st H	2nd H	OT	OT	Final	Record	Overall	Conf
Graves County Eagles	23	17	0	0	40	Eagles	27-4	
Bishop Brossart Mustangs	16	31	0	0	47	Mustangs	20-12	

	Eagles Mustangs		Eagles Mustangs		Eagles Mustangs			
Points off Turnovers	7	14	Second Effort Points	8	6	Bench Points	12	7
Points in the Paint	20	18	3 Point Points	9	12	Free Throw Points	3	7
Largest Lead	21	12 (9 pts)	Lead Changes	5		Number of Ties	3	

**University of Kentucky Basketball - Play by Play Report (pg 1)**  
**Graves County Eagles vs. Bishop Brossart Mustangs**  
 Date: 03/16/2000 Time: 1:00 pm Site: Boys' Sweet 16, Rupp Arena-Lexington, KY Attendance:

##	Name	Action	Action	Score	Clock	Diff	##	Name	Action	Action
12	T Wiles	Start Game					14	S Ruth	Start Game	
14	W Hatcher	Start Game					22	C Ryan	Start Game	
24	K Manning	Start Game					24	J Clark	Start Game	
40	N Wilkerson	Start Game					30	D Enzweiler	Start Game	
44	W Johnson	Start Game					35	J Seiter	Start Game	
44	W Johnson	Jump Ball Win			1 7:57		35	J Seiter	Jump Ball Loss	
					1 7:48		24	J Clark	Turn Over	(Fumble)
					1 7:26		22	C Ryan	FG Attempt	35 J Seiter Off Reb
					1 7:21		35	J Seiter	Turn Over	
					1 7:20					
44	W Johnson	Steal			1 7:07	+1	30	D Enzweiler	Personal Foul	
44	W Johnson	FT Made		1-0	1 7:07		35	J Seiter	Def Rebound	
44	W Johnson	FT Attempt			1 6:59		14	S Ruth	Turn Over	(Fumble)
					1 6:49					
12	T Wiles	3Pt Attempt	44 W Johnson Off Reb		1 6:47	+3				
44	W Johnson	Putback Made		3-0	1 6:27		35	J Seiter	FG Attempt	
12	T Wiles	Def Rebound			1 6:25	+5				
24	K Manning	Layup Made	12 T Wiles Assist	5-0	1 6:07	+3	35	J Seiter	Layup Made	
				5-2	1 5:58		14	S Ruth	Def Rebound	
24	K Manning	FG Attempt			1 5:47		24	J Clark	Offensive Foul	
					1 5:47		24	J Clark	Turn Over	
					1 5:47		3	N Ziegler	Enter Game	for 30 D Enzweiler
40	N Wilkerson	FG Attempt			1 5:36		35	J Seiter	Def Rebound	
					1 5:20		3	N Ziegler	Offensive Foul	
					1 5:20		3	N Ziegler	Turn Over	
24	K Manning	Turn Over	(Fumble)		1 5:09					
					1 5:02		22	C Ryan	3Pt Attempt	14 S Ruth Off Reb
					1 5:01					
12	T Wiles	Personal Foul			1 5:01					
34	J James	Enter Game	for 24 K Manning		1 5:01					
				5-3	1 5:01	+2	14	S Ruth	FT Made	
				5-4	1 5:01	+1	14	S Ruth	FT Made	
14	W Hatcher	Turn Over			1 4:57					
					1 4:56		24	J Clark	Steal	
44	W Johnson	Block	34 J James Def Reb		1 4:54		24	J Clark	FG Attempt	
					1 4:51		24	J Clark	Personal Foul	
					1 4:51		5	J Lloyd	Enter Game	for 24 J Clark
10	J Elliott	Enter Game	for 12 T Wiles		1 4:51					
34	J James	FG Attempt			1 4:41		35	J Seiter	Block	14 S Ruth Def Reb
44	W Johnson	Block			1 4:33		22	C Ryan	FG Attempt	Mustangs Off Reb
44	W Johnson	Def Rebound			1 4:02		3	N Ziegler	3Pt Attempt	
					1 3:43		3	N Ziegler	Personal Foul	
					1 3:43		30	D Enzweiler	Enter Game	for 3 N Ziegler
34	J James	FG Made		7-4	1 3:13	+3				
				7-6	1 2:48	+1	22	C Ryan	FG Made	5 J Lloyd Assist
40	N Wilkerson	FG Attempt			1 2:32		35	J Seiter	Def Rebound	
					1 2:23		22	C Ryan	Offensive Foul	
					1 2:23		22	C Ryan	Turn Over	
					1 2:23					
10	J Elliott	Leave Game			1 2:23					
14	W Hatcher	Leave Game			1 2:23					
34	J James	Leave Game			1 2:23					
40	N Wilkerson	Leave Game			1 2:23					
12	T Wiles	Enter Game	for 44 W Johnson		1 2:23					
24	K Manning	Enter Game			1 2:23					
54	S Hatchell	Enter Game			1 2:23					
					1 2:23		24	J Clark	Enter Game	for 22 C Ryan
					1 2:23					
14	W Hatcher	Enter Game			1 2:23					
44	W Johnson	Enter Game			1 2:23					
44	W Johnson	FG Made		9-6	1 1:49	+3				
				9-8	1 1:33	+1	24	J Clark	FG Made	5 J Lloyd Assist
54	S Hatchell	Turn Over	(Traveling)		1 1:10					
					1 1:10		24	J Clark	Leave Game	
					1 1:10		22	C Ryan	Enter Game	for 30 D Enzweiler
					1 1:10		25	R Lushek	Enter Game	
12	T Wiles	Personal Foul			1 0:41					
12	T Wiles	Leave Game			1 0:41					
10	J Elliott	Enter Game	for 54 S Hatchell		1 0:41					

**University of Kentucky Basketball - Play by Play Report (pg 2)**  
**Graves County Eagles vs. Bishop Brossart Mustangs**  
 Date: 03/16/2000 Time: 1:00 pm Site: Boys' Sweet 16, Rupp Arena-Lexington, KY Attendance:

##	Name	Action	Action	Score	Clock	Diff	##	Name	Action	Action
40	N Wilkerson	Enter Game			1 0:41					
				9-9	1 0:41	(T1)	30	D Enzweiler	Enter Game	for 35 J Seiter
44	W Johnson	Def Rebound			1 0:41		14	S Ruth	FT Made	
10	J Elliott	3Pt Made	14 W Hatcher Assist	12-9	1 0:00	+3	14	S Ruth	FT Attempt	
<b>End of Period Summary Eagles 12 Mustangs 9</b>										
Largest Lead: Eagles 5 Mustangs 0 (5 pts)						Lead Changes: 0 Ties: 1				
Lead in Period: Eagles 5 Mustangs 0 (5 pts)						Lead Changes: 0 Ties: 1 (this period)				
3 for 3 oppo pts						6 for 5 oppo pts				
1 for 2 pts						3 for 2 pts				
5/10 for 50.0 %						3/9 for 33.3 %				
1/2 for 50.0 %						3/4 for 75.0 %				
					2 8:00		35	J Seiter	Enter Game	for 30 D Enzweiler
					2 7:46		35	J Seiter	Turn Over	
24	K Manning	Steal			2 7:45					
40	N Wilkerson	Turn Over	(Bad Pass)		2 7:25					
					2 7:22		22	C Ryan	Steal	
24	K Manning	Def Rebound			2 7:01		22	C Ryan	FG Attempt	
10	J Elliott	3Pt Attempt	40 N Wilkerson Off Reb		2 6:48					
40	N Wilkerson	Putback Made		14-9	2 6:46	+5				
44	W Johnson	Def Rebound			2 6:26		22	C Ryan	3Pt Attempt	
10	J Elliott	3Pt Attempt	14 W Hatcher Off Reb		2 6:13					
					2 6:01		5	J Lloyd	Leave Game	
					2 6:01		3	N Ziegler	Enter Game	for 22 C Ryan
					2 6:01		24	J Clark	Enter Game	
40	N Wilkerson	FG Made	24 K Manning Assist	16-9	2 5:49	+7				
44	W Johnson	Layup Made	24 K Manning Assist	16-11	2 5:16	+5	35	J Seiter	FG Made	
44	W Johnson	Personal Foul			2 4:44					
					2 4:44		25	R Luscek	FT Attempt	Mustangs Deadball Reb
					2 4:44	+6	25	R Luscek	FT Made	
					2 4:44		22	C Ryan	Enter Game	for 25 R Luscek
10	J Elliott	3Pt Made	24 K Manning Assist	21-12	2 4:19	+9				
					2 3:28		35	J Seiter	FG Attempt	35 J Seiter Off Reb
14	W Hatcher	Def Rebound			2 3:12		35	J Seiter	3Pt Attempt	
14	W Hatcher	Turn Over	(Bad Pass)		2 3:08					
24	K Manning	Def Rebound			2 2:49		24	J Clark	FG Attempt	
					2 2:43					
34	J James	Enter Game	for 24 K Manning		2 2:43					
					2 2:43		30	D Enzweiler	Enter Game	for 24 J Clark
10	J Elliott	3Pt Attempt			2 2:39		35	J Seiter	Def Rebound	
					2 2:18		22	C Ryan	3Pt Attempt	30 D Enzweiler Off Reb
				21-14	2 2:16	+7	30	D Enzweiler	Putback Made	
10	J Elliott	Turn Over	(Bad Pass)		2 2:00					
					2 1:58		14	S Ruth	Steal	
10	J Elliott	Def Rebound			2 1:55		22	C Ryan	FG Attempt	
40	N Wilkerson	FG Attempt			2 0:57		Mustangs Def Rebound			
24	K Manning	Enter Game	for 34 J James		2 0:57					
54	S Hatchell	Enter Game	for 40 N Wilkerson		2 0:57					
				21-16	2 0:18	+5	30	D Enzweiler	FG Made	
54	S Hatchell	FG Made	44 W Johnson Assist	23-16	2 0:02	+7				
					2 0:02		3	N Ziegler	Personal Foul	
					2 0:02		5	J Lloyd	Enter Game	for 3 N Ziegler
34	J James	Enter Game	for 44 W Johnson		2 0:02					
54	S Hatchell	FT Attempt			2 0:02		30	D Enzweiler	Def Rebound	

**OFFICIAL NCAA BASKETBALL BOX SCORE**  
 Bishop Brossart Mustangs vs Graves County Eagles

03/16/2000 1:00 pm  
 1st Half Box Score

Arena Boys' Sweet 16, Rupp Arena  
 City,State Lexington, KY

No.	Bishop Brossart Mustangs	Total FG		3-point		FT	FTA	Rebounds			F	TP	A	TO	BLK	STL	MIN
		FG	FGA	FG	FGA			Off	Def	Tot							
3	Nick Ziegler	0	1	0	1	0	0	0	0	0	3	0	0	1	0	0	8:03
5	Jon Lloyd	0	0	0	0	0	0	0	0	0	0	0	2	0	0	0	6:52
10	Michael Elen	0	0	0	0	0	0	0	0	0	0	0	0	0	0	0	DNP
12	Andy Kremer	0	0	0	0	0	0	0	0	0	0	0	0	0	0	0	DNP
14	* Scott Ruth	0	0	0	0	3	4	1	2	3	0	3	0	1	0	1	16:00
22	* Chris Ryan	1	8	0	3	0	0	0	0	0	1	2	0	1	0	1	13:30
24	* Jeff Clark	1	3	0	0	0	0	0	0	0	2	2	0	2	0	1	7:40
25	Rob Lushek	0	0	0	0	1	2	0	0	0	0	1	0	0	0	0	4:26
30	* Dave Enzweiler	2	2	0	0	0	0	1	1	2	1	4	0	0	0	0	8:10
32	Chad Bertke	0	0	0	0	0	0	0	0	0	0	0	0	0	0	0	DNP
33	Paul Rhoden	0	0	0	0	0	0	0	0	0	0	0	0	0	0	0	DNP
35	* Justin Seiter	2	5	0	1	0	0	2	4	6	0	4	0	2	1	0	15:19
42	Brandon Seiter	0	0	0	0	0	0	0	0	0	0	0	0	0	0	0	DNP
<b>Team (Included in Totals)</b>								<b>1</b>	<b>1</b>	<b>2</b>							
<b>Totals</b>		<b>6</b>	<b>19</b>	<b>0</b>	<b>5</b>	<b>4</b>	<b>6</b>	<b>5</b>	<b>8</b>	<b>13</b>	<b>7</b>	<b>16</b>	<b>2</b>	<b>7</b>	<b>1</b>	<b>3</b>	<b>80</b>

Total FG%: 1st half 6 - 19 (31.6%) 2nd half 0 - 0 (0.00%) Game 6 - 19 (31.6%)  
 3Pt FG%: 1st half 0 - 5 (0.00%) 2nd half 0 - 0 (0.00%) Game 0 - 5 (0.00%)  
 FT%: 1st half 4 - 6 (66.7%) 2nd half 0 - 0 (0.00%) Game 4 - 6 (66.7%)

Deadball  
 rebounds  
 1

No.	Graves County Eagles	Total FG		3-point		FT	FTA	Rebounds			F	TP	A	TO	BLK	STL	MIN
		FG	FGA	FG	FGA			Off	Def	Tot							
10	Jason Elliott	2	5	2	5	0	0	0	1	1	0	6	0	1	0	0	11:09
12	* Tyler Wiles	0	1	0	1	0	0	0	1	1	2	0	1	0	0	0	4:51
14	* Wes Hatcher	0	0	0	0	0	0	1	1	2	0	0	1	2	0	0	16:00
20	Jason Doughty	0	0	0	0	0	0	0	0	0	0	0	0	0	0	0	DNP
22	Chase Kendall	0	0	0	0	0	0	0	0	0	0	0	0	0	0	0	DNP
24	* Kent Manning	1	2	0	0	0	0	0	2	2	0	2	3	1	0	1	11:36
30	Sam Brown	0	0	0	0	0	0	0	0	0	0	0	0	0	0	0	DNP
32	Coye Elliott	0	0	0	0	0	0	0	0	0	0	0	0	0	0	0	DNP
34	John James	1	2	0	0	0	0	0	1	1	0	2	0	0	0	0	4:26
40	* Nathan Wilkerson	2	5	0	0	0	0	1	0	1	0	4	0	1	0	0	13:21
42	Chase Gray	0	0	0	0	0	0	0	0	0	0	0	0	0	0	0	DNP
44	* Wes Johnson	3	3	0	0	1	2	1	3	4	1	7	1	0	2	1	15:58
50	Mykel Tidwell	0	0	0	0	0	0	0	0	0	0	0	0	0	0	0	DNP
52	Zach Baldwin	0	0	0	0	0	0	0	0	0	0	0	0	0	0	0	DNP
54	Stephen Hatchell	1	1	0	0	0	1	0	0	0	0	2	0	1	0	0	2:39
<b>Team (Included in Totals)</b>								<b>0</b>	<b>0</b>	<b>0</b>							
<b>Totals</b>		<b>10</b>	<b>19</b>	<b>2</b>	<b>6</b>	<b>1</b>	<b>3</b>	<b>3</b>	<b>9</b>	<b>12</b>	<b>3</b>	<b>23</b>	<b>6</b>	<b>6</b>	<b>2</b>	<b>2</b>	<b>80</b>

Total FG%: 1st half 10 - 19 (52.6%) 2nd half 0 - 0 (0.00%) Game 10 - 19 (52.6%)  
 3Pt FG%: 1st half 2 - 6 (33.3%) 2nd half 0 - 0 (0.00%) Game 2 - 6 (33.3%)  
 FT%: 1st half 1 - 3 (33.3%) 2nd half 0 - 0 (0.00%) Game 1 - 3 (33.3%)

Deadball  
 rebounds  
 0

Technical Fouls: None

Attendance: Unknown

Officials: Roger Cross, Jerry Hurley, Bruce Morris

Score by Period	1st H	2nd H	Final	Record	Overall	Conf
Graves County Eagles	23	0	23	Eagles		
Bishop Brossart Mustangs	16	0	16	Mustangs	19-12	

<b>Eagles Mustangs</b>	<b>Points off Turnovers</b>	5	3	<b>Second Effort Points</b>	6	4	<b>Bench Points</b>	10	1
	<b>Points in the Paint</b>	10	4	<b>3 Point Points</b>	6	0	<b>Free Throw Points</b>	1	4
	<b>Largest Lead</b>	21	12 (9 pts)	<b>Lead Changes</b>	0		<b>Number of Ties</b>	1	

University of Kentucky Basketball - Play by Play Report - Period 3 (pg 1)  
 Graves County Eagles vs. Bishop Brossart Mustangs  
 Date: 03/16/2000 Time: 1:00 pm Site: Boys' Sweet 16, Rupp Arena-Lexington, KY Attendance:

##	Name	Action	Action	Score	Clock	Diff	##	Name	Action	Action
10	J Elliott	Leave Game			3 8:00					
14	W Hatcher	Leave Game			3 8:00					
24	K Manning	Leave Game			3 8:00					
34	J James	Leave Game			3 8:00					
54	S Hatchell	Leave Game			3 8:00					
					3 8:00		5	J Lloyd	Leave Game	
					3 8:00		14	S Ruth	Leave Game	
					3 8:00		22	C Ryan	Leave Game	
					3 8:00		30	D Enzweiler	Leave Game	
					3 8:00		35	J Seiter	Leave Game	
12	T Wiles	Enter Game			3 8:00					
14	W Hatcher	Enter Game			3 8:00					
24	K Manning	Enter Game			3 8:00					
40	N Wilkerson	Enter Game			3 8:00					
44	W Johnson	Enter Game			3 8:00					
					3 8:00		14	S Ruth	Enter Game	
					3 8:00		22	C Ryan	Enter Game	
					3 8:00		24	J Clark	Enter Game	
					3 8:00		30	D Enzweiler	Enter Game	
					3 8:00		35	J Seiter	Enter Game	
					3 7:18		30	D Enzweiler	Personal Foul	
					3 7:15		30	D Enzweiler	Personal Foul	
44	W Johnson	FT Attempt	Eagles Deadball Reb		3 7:15					
44	W Johnson	FT Attempt			3 7:15		22	C Ryan	Def Rebound	
					3 7:01		24	J Clark	Turn Over	(Bad Pass)
					3 7:01		3	N Ziegler	Enter Game	for 30 D Enzweiler
14	W Hatcher	FG Attempt	40 N Wilkerson Off Reb		3 6:55		35	J Seiter	Block	
40	N Wilkerson	Putback Att			3 6:51		35	J Seiter	Def Rebound	
44	W Johnson	Def Rebound			3 6:44		22	C Ryan	3Pt Attempt	
12	T Wiles	3Pt Attempt	44 W Johnson Off Reb		3 6:24					
24	K Manning	Turn Over	(Bad Pass)		3 6:03					
					3 6:01		3	N Ziegler	Steal	
				23-18	3 5:54	+5	14	S Ruth	FG Made	
14	W Hatcher	Layup Made	24 K Manning Assist	25-18	3 5:44	+7				
				25-21	3 5:30	+4	14	S Ruth	3Pt Made	
24	K Manning	Turn Over			3 5:08					
Eagles	20 Sec Time Out				3 5:08		5	J Lloyd	Enter Game	for 22 C Ryan
					3 4:51		14	S Ruth	Offensive Foul	
					3 4:51		14	S Ruth	Turn Over	
40	N Wilkerson	FG Attempt			3 4:44		35	J Seiter	Block	5 J Lloyd Def Reb
				25-24	3 3:58	+1	3	N Ziegler	3Pt Made	24 J Clark Assist
12	T Wiles	3Pt Attempt			3 3:41		14	S Ruth	Def Rebound	
12	T Wiles	Def Rebound			3 3:22		35	J Seiter	FG Attempt	
44	W Johnson	FG Made			3 3:09	+3				
44	W Johnson	Def Rebound			3 2:52		24	J Clark	FG Attempt	
14	W Hatcher	Turn Over	(Bad Pass)		3 2:41					
					3 2:38		35	J Seiter	Steal	
				27-27	3 2:26	(T2)	14	S Ruth	3Pt Made	5 J Lloyd Assist
					3 2:24					
12	T Wiles	Leave Game			3 2:24					
14	W Hatcher	Leave Game			3 2:24					
24	K Manning	Leave Game			3 2:24					
40	N Wilkerson	Leave Game			3 2:24					
10	J Elliott	Enter Game	for 44 W Johnson		3 2:24					
14	W Hatcher	Enter Game			3 2:24					
24	K Manning	Enter Game			3 2:24					
34	J James	Enter Game			3 2:24					
44	W Johnson	Enter Game			3 2:24					
44	W Johnson	FG Made	10 J Elliott Assist	29-27	3 1:55	+2				
					3 1:47		14	S Ruth	Turn Over	
24	K Manning	Steal			3 1:46					
34	J James	FG Made	24 K Manning Assist	31-27	3 1:44	+4				
					3 1:38		Mustangs	20 Sec Time Out		
					3 1:38		22	C Ryan	Enter Game	for 3 N Ziegler
					3 1:38		3	N Ziegler	Enter Game	for 5 J Lloyd

**University of Kentucky Basketball - Play by Play Report - Period 3 (pg 2)**  
**Graves County Eagles vs. Bishop Brossart Mustangs**  
 Date: 03/16/2000 Time: 1:00 pm Site: Boys' Sweet 16, Rupp Arena-Lexington, KY Attendance:

## Name	Action	Action	Score	Clock	Diff	## Name	Action	Action
			31-30	3 1:17	+1	3 N Ziegler	3Pt Made	22 C Ryan Assist
44 W Johnson	Turn Over			3 0:35				
				3 0:35		35 J Seiter	Steal	
44 W Johnson	Def Rebound			3 0:06		35 J Seiter	FG Attempt	
24 K Manning	FG Attempt			3 0:00		24 J Clark	Def Rebound	

**End of Period Summary Eagles 31 Mustangs 30**

**Largest Lead: Eagles 21 Mustangs 12 (9 pts)**  
**Lead in Period: Eagles 23 Mustangs 16 (7 pts)**  
 4 for 5 oppo pts  
 2 for 0 pts  
 4/10 for 40.0 %  
 0/2 for 0.00 %

**Turnovers**  
**2nd Chances**  
**Field Goals**  
**Free Throws**

**Lead Changes: 0 Ties: 2**  
**Lead Changes: 0 Ties: 1 (this period)**  
 3 for 2 oppo pts  
 0 for 0 pts  
 5/9 for 55.6 %  
 0/0 for 0.00 %

**University of Kentucky Basketball - Play by Play Report - Period 4 (pg 1)**  
**Graves County Eagles vs. Bishop Brossart Mustangs**  
 Date: 03/16/2000 Time: 1:00 pm Site: Boys' Sweet 16, Rupp Arena-Lexington, KY Attendance:

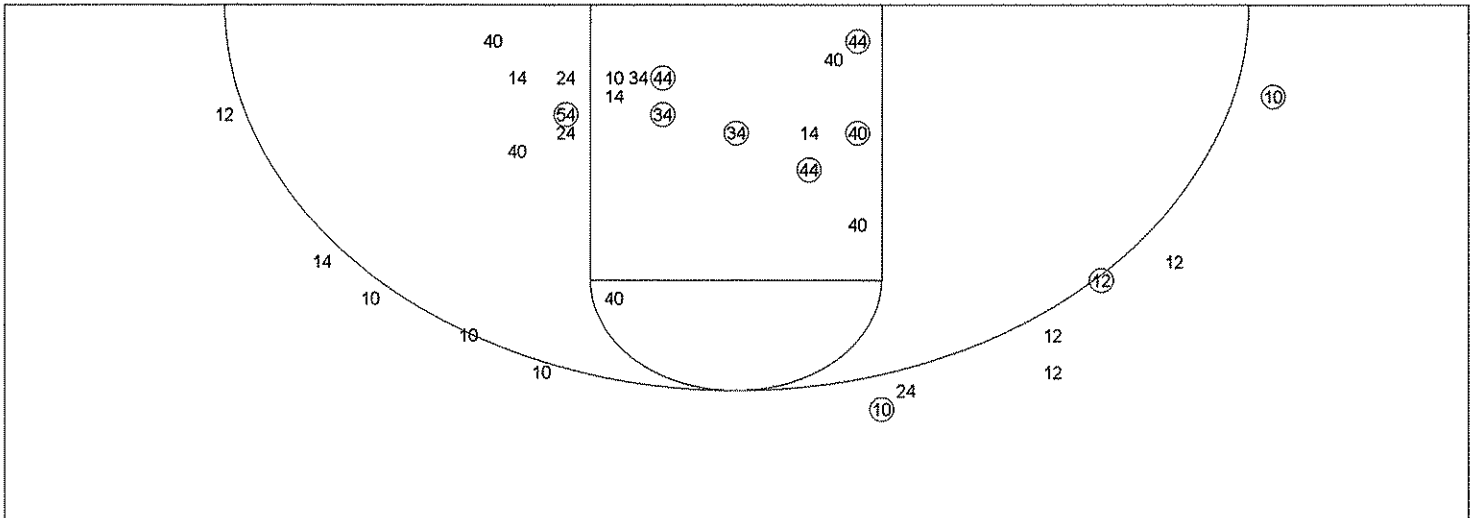
## Name	Action	Action	Score	Clock	Diff	## Name	Action	Action
12 T Wiles	Enter Game	for 10 J Elliott		4 8:00				
12 T Wiles	Def Rebound			4 7:44		24 J Clark	FG Attempt	
14 W Hatcher	Turn Over			4 7:35				
				4 7:35		35 J Seiter	Steal	
				4 7:33		35 J Seiter	Turn Over	
14 W Hatcher	Turn Over			4 7:24				
			31-32	4 7:22		3 N Ziegler	Steal	
				4 7:21	-1 (L1)	22 C Ryan	Layup Made	24 J Clark Assist
Eagles	20 Sec Time Out			4 7:14				
44 W Johnson	FT Made		32-32	4 6:47	(T3)	35 J Seiter	Personal Foul	
44 W Johnson	FT Made		33-32	4 6:47	+1 (L2)			
			33-34	4 6:34	-1 (L3)	24 J Clark	FG Made	
34 J James	Turn Over			4 6:19				
				4 6:18		14 S Ruth	Steal	
12 T Wiles	Leave Game			4 6:16				
10 J Elliott	Enter Game	for 34 J James		4 6:16				
40 N Wilkerson	Enter Game			4 6:16				
14 W Hatcher	Def Rebound			4 6:16		22 C Ryan	3Pt Attempt	
44 W Johnson	Layup Made	14 W Hatcher Assist	35-34	4 6:16	+1 (L4)			
			35-36	4 6:16	-1 (L5)	22 C Ryan	Layup Made	35 J Seiter Assist
40 N Wilkerson	FG Attempt	Eagles Off Reb		4 6:16				
12 T Wiles	Enter Game	for 24 K Manning		4 4:57				
10 J Elliott	FG Attempt	10 J Elliott Off Reb		4 4:55				
10 J Elliott	Putback Att			4 4:53		14 S Ruth	Def Rebound	
Eagles	Time Out			4 4:19				
10 J Elliott	Leave Game			4 4:19				
24 K Manning	Enter Game	for 40 N Wilkerson		4 4:19				
34 J James	Enter Game			4 4:19				
			35-38	4 4:11	-3	14 S Ruth	FG Made	22 C Ryan Assist
14 W Hatcher	FG Attempt			4 4:04		24 J Clark	Def Rebound	
34 J James	Personal Foul			4 4:03				
12 T Wiles	Personal Foul			4 3:49				
12 T Wiles	Def Rebound			4 3:45		35 J Seiter	3Pt Attempt	
24 K Manning	Turn Over			4 3:24				
				4 3:00				
34 J James	Block			4 2:56		22 C Ryan	FG Attempt	35 J Seiter Off Reb
			35-40	4 2:51	-5	35 J Seiter	Putback Made	
Eagles	Time Out			4 2:51				
40 N Wilkerson	Enter Game	for 34 J James		4 2:51				
12 T Wiles	3Pt Made	14 W Hatcher Assist	38-40	4 2:42	-2			
44 W Johnson	Personal Foul			4 2:33				
34 J James	Enter Game	for 40 N Wilkerson		4 2:33				
14 W Hatcher	Personal Foul			4 2:14				
34 J James	Def Rebound			4 1:58		35 J Seiter	FG Attempt	
24 K Manning	Turn Over			4 1:44				
44 W Johnson	Personal Foul			4 1:44				
			38-42	4 1:21	-4	24 J Clark	Layup Made	
14 W Hatcher	FG Attempt			4 1:06		35 J Seiter	Block	14 S Ruth Def Reb
				4 0:57		14 S Ruth	Turn Over	
14 W Hatcher	Steal			4 0:56				
14 W Hatcher	Turn Over			4 0:55				
				4 0:55		14 S Ruth	Steal	
14 W Hatcher	Personal Foul			4 0:55				
24 K Manning	Personal Foul			4 0:47				
10 J Elliott	Enter Game	for 24 K Manning		4 0:47				
34 J James	Def Rebound			4 0:47		14 S Ruth	FT Attempt	
12 T Wiles	3Pt Attempt			4 0:37		24 J Clark	Def Rebound	
			38-44	4 0:27	-6	14 S Ruth	Layup Made	35 J Seiter Assist
34 J James	Personal Foul			4 0:27				
24 K Manning	Enter Game	for 34 J James		4 0:27				
			38-45	4 0:27	-7	14 S Ruth	FT Made	
				4 0:18		35 J Seiter	Personal Foul	
14 W Hatcher	3Pt Attempt	14 W Hatcher Off Reb		4 0:17				
14 W Hatcher	Putback Made		40-45	4 0:16	-5			
Eagles	Time Out			4 0:12				
34 J James	Enter Game	for 12 T Wiles		4 0:12				



**University of Kentucky Basketball - Play by Play Report - Period 4 (pg 2)**  
**Graves County Eagles vs. Bishop Brossart Mustangs**  
**Date: 03/16/2000 Time: 1:00 pm Site: Boys' Sweet 16, Rupp Arena-Lexington, KY Attendance:**

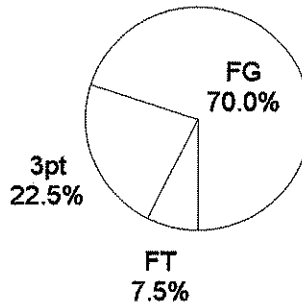
## Name	Action	Action	Score	Clock	Diff	## Name	Action	Action
44 W Johnson	Personal Foul			4 0:11				
12 T Wiles	Enter Game	for 34 J James		4 0:11				
			40-46	4 0:11	-6	24 J Clark	FT Made	
			40-47	4 0:11	-7	24 J Clark	FT Made	
24 K Manning	3Pt Attempt			4 0:06		Mustangs	Def Rebound	

**University of Kentucky Basketball - TEAM SHOT CHART for the Eagles**  
**Graves County Eagles vs. Bishop Brossart Mustangs**  
**DATE: 03/16/2000 TIME: 1:00 pm SITE: Boys' Sweet 16, Rupp Arena-Lexington, KY**

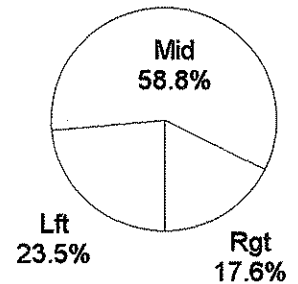


Shot Summary	M/A	%	PTS
3Pt FG	3/12	25.0%	9
2Pt FG	14/28	50.0%	28
Layups - L	3/3	100.0%	6
Layups - R	1/1	100.0%	2
Dunks	0/0	0.0%	0
Putbacks	3/5	60.0%	6
Overall Shooting	17/40	42.5%	37
Free Throws	3/7	42.9%	3
Total Points			40

Scoring Distribution

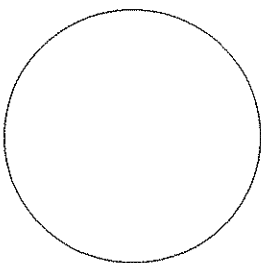


Scoring Locations



By Period	FG	FGA	FG%	3Pt	3PA	3P%	FT	FTA	FT%	PTS	ORB	DRB	TR	PF	AST	TO	BS	ST	P/S
1st Period	5	10	50.0	1	2	50.0	1	2	50.0	12	1	4	5	2	2	3	2	1	1.09
2nd Period	5	9	55.6	1	4	25.0	0	1	0.00	11	2	5	7	1	4	3	0	1	1.22
3rd Period	4	10	40.0	0	2	0.00	0	2	0.00	8	2	4	6	0	3	4	0	1	0.73
4th Period	3	11	27.3	1	4	25.0	2	2	100	9	3	5	8	9	2	6	1	1	0.75
Game	17	40	42.5	3	12	25.0	3	7	42.9	40	8	18	26	12	11	16	3	4	0.93

Scoring Breakdown



Scoring Range

